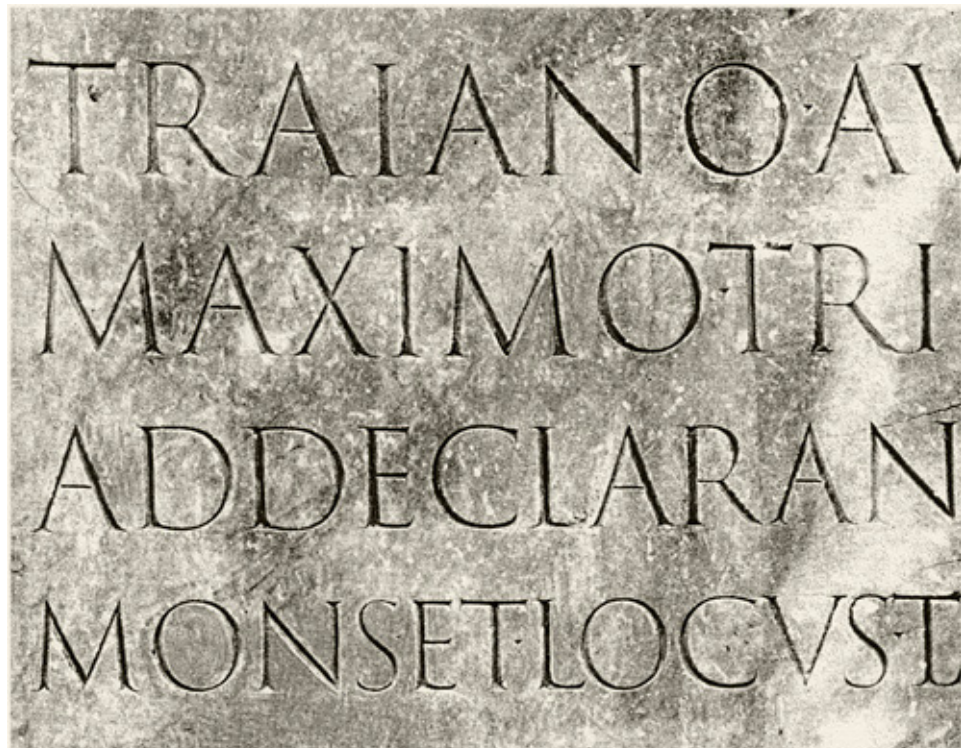


**Phonograms—Symbols or signs representing primary sounds.
Phoenician Alphabet—The Phoenicians developed a set of 22
symbols.**



Greek Alphabet—The Phoenician alphabet was adopted by the Greeks, it was the first to have distinct letters for vowels as well as consonants.



Roman Alphabet—Romans adopted the Greek alphabet and fashioned several more distinctive letters.

| Early Name | Probable Meaning | Greek Name | Cretan pictographs | Phoenician | Early Greek | Classical Greek | Latin | Modern English |
|------------|-------------------|------------|--------------------|------------|-------------|-----------------|-------|----------------|
| Āleph | Ox | Alpha | | | | | | |
| Bēth | House | Bēta | | | | | | |
| Gimel | Camel | Gamma | | | | | | |
| Dāleth | Folding door | Delta | | | | | | |
| Hē | Lattice window | Epsilon | | | | | | |
| Wāw | Hook, nail | | | | | | | |
| Zayin | Weapon | Zēta | | | | | | |
| Hēth | Fence, Barrier | Ēta | | | | | | |
| Tēth | A winding (?) | Thēta | | | | | | |
| Yōd | Hand | lōta | | | | | | |
| Kaph | Bent Hand | Kappa | | | | | | |
| Lāmed | Ox-goad | Lambda | | | | | | |
| Mēm | Water | Mu | | | | | | |
| Nūn | Fish | Nu | | | | | | |
| Sāmek | Prop (?) | Xei | | | | | | |
| 'Ayin | Eye | Ou | | | | | | |
| Pē | Mouth | Pei | | | | | | |
| Sādē | Fish-hook (?) | | | | | | | |
| Kōph | Eye of Needle (?) | Koppa | | | | | | |
| Rēsh | Head | Rho | | | | | | |
| Shin, sin | Tooth | Sigma, san | | | | | | |
| Taw | Mark | Tau | | | | | | |

| PHOENICIAN Phonetic value | GREEK ALPHABETS | | | Phonetic value | ITALIAN ALPHABETS | | | | |
|------------------------------|-----------------|---------|------------|----------------|-------------------|----------|-------------|---------|----|
| | EASTERN | WESTERN | CHALCIDIAN | | PELAGIAN | ETRUSCAN | EARLY LATIN | ROMAN | |
| | a | A | A | AAA | a | AA | AAA | AAA | A |
| | b | B | BB | B | b | B | | B'B | B |
| | g,c | Γ | < | ^C | g,c | <C | >>C | <CG | CG |
| | d | Δ | ▷ | ΔD | d | D | | ▷D | D |
| | e | E | E | E E E | e | E E | ΞΞΞEΞ | E E I I | E |
| | f,v,u | | F | F | w,f | F | ϠϠϠEϠ | F F I' | F |
| | z | I | I | I | z | ‡I | ‡‡‡± | | |
| | h | H | H | ΘH | h | Θ | ϠΘ | H | H |
| | th | ⊗ | ⊕ | ⊕⊙ | th | ⊕⊙ | ⊗⊙⊙ | | |
| | i | I | I | I | i | I | I | I | I |
| | k | K | K | K | k | K | κ | KK | K |
| | l | Λ | Λ | Λ | l | Λ | λ | ΛΛ | L |
| | m | M | M | ΜΜ | m | Μ | ΜΜΜΜ | ΜΜΜΜ | M |
| | n | N | N | N | n | N | ΝΝΝΝ | ΝΝ | N |
| | x | E | + | + | x | ⊕ | | | |
| | o | ⊙ | ⊙ | ⊙⊙ | o | ⊙ | | ⊙⊙ | ⊙ |
| | p | Π | Π | ΠΠ | p | Π | Π | ΠΠΠ | P |
| | ts | | | | s | ΥΜ | ΜΜ | | |
| | q | | ♀ | ♀ | q | ♀♀ | | ♀♀♀ | Q |
| | r | P | R | ΡΡΡ | r | P | ⊙⊙♀ | ΡΡΡ | R |
| | s | Σ | ς | ςςς | s | ΞΞ | ςςς | ςς | S |
| | t | T | T | T | t | ΤΤ | ‡‡‡Τ | T | T |
| | u,v | ΥV | ΥV | ΥV | u,v | Υ | ΥΥΥ | ΥΥ | V |
| | ch | | | | ch | +X | | X | X |
| | ph | ⊕ | | ⊕⊕ | ph | φ | ⊕φ | | |
| | ch | | | ↓ | ch | Υ | ↓ | | |
| | f | | | | f | | ⊗⊗ | | |

POR J AUSTR E VRBEM.

OPSIDIONE·TAMEN·N·C·CORPORA·MOENIBUS·A·NT·
CASTRaque·PROMURIS·ATQUE·ARMA·PEDESTRIA·PONUNT·
HOS·INTER·COETUS·ALISQUE·AD·BELLA·PARATUS·
UTRAQUE·SOLLEMNIS·ITERUM·RE·VOCaverat·ORBES·
CONSILIIS·NOX·APTA·DVCUM·LUX·APTIOR·ARMIS·

THERMAE
M·CRASSI·FRVGI
AQVA·MARINA·ET·BALN
AQVA·DVLCHAN·VARIVS·L

True writing is a graphic expression of language. This relation makes writing unique among visual forms of expression and fundamentally different from drawing or painting.

**How does graphic communication vary
from other art forms?**

**To what extent did language shape
humanity? And to what extent did
humanity shape language?**

What is graphic communication versus graphic design?